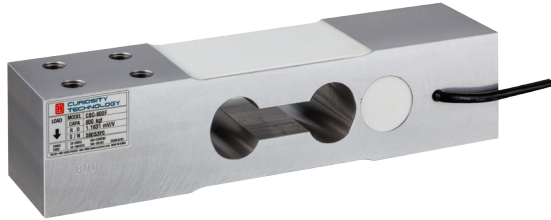


CBC-F

Single Point Load Cell
300, 600 kgf



FEATURES

- Low cost
- Off center compensated
- Protection class IP65

Material

- Anodized Aluminum

Cable

- Braided shield 4-wire round cable with PVC - jacket

Mounting

- Socket-head cap screw
- M12 x 1.75 (10.9)
- Tightening torque : 100Nm

Maximum Platform Size

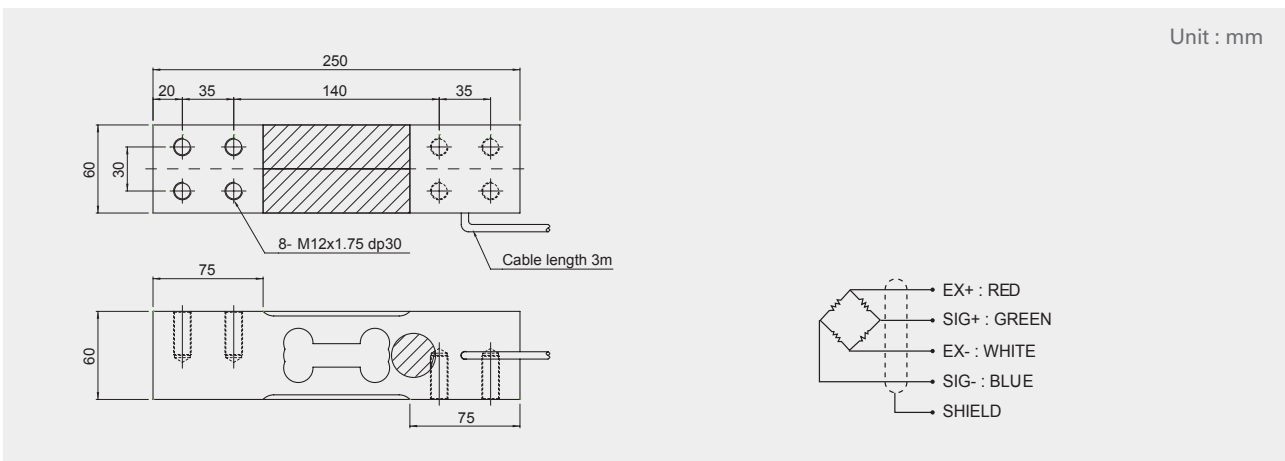
- 600 x 600 mm

Ordering Information

- CBC -xxx "F"

└── Capacity in kgf

DIMENSIONS



SPECIFICATIONS

| Max. Capacity | | kgf | 300, 600 kgf | |
|-------------------------|-------------|--------------|-----------------|-------|
| Rated output | | mV/V | 1.2 (Approx.) | |
| Zero balance | | mV/V | 0 ± 0.1 | |
| Combined error | | %RO | 0.03 | |
| | | %RO | 0.01 | |
| | | %RO | 0.03 | |
| | | Zero value | %RO/10°C | 0.04 |
| | | Output value | %RO/10°C | 0.015 |
| Excitation | Recommended | V | 10 | |
| | Maximum | V | 15 | |
| Resistance | Input | Ω | 400 ± 20 | |
| | Output | Ω | 350 ± 3.5 | |
| | Insulation | MΩ | >2,000 @ 50V DC | |
| Compensated temp. range | | °C | -10 ~ +40 | |
| Operating temp. range | | °C | -20 ~ +80 | |